

NEW AVONLEA P.U.D.

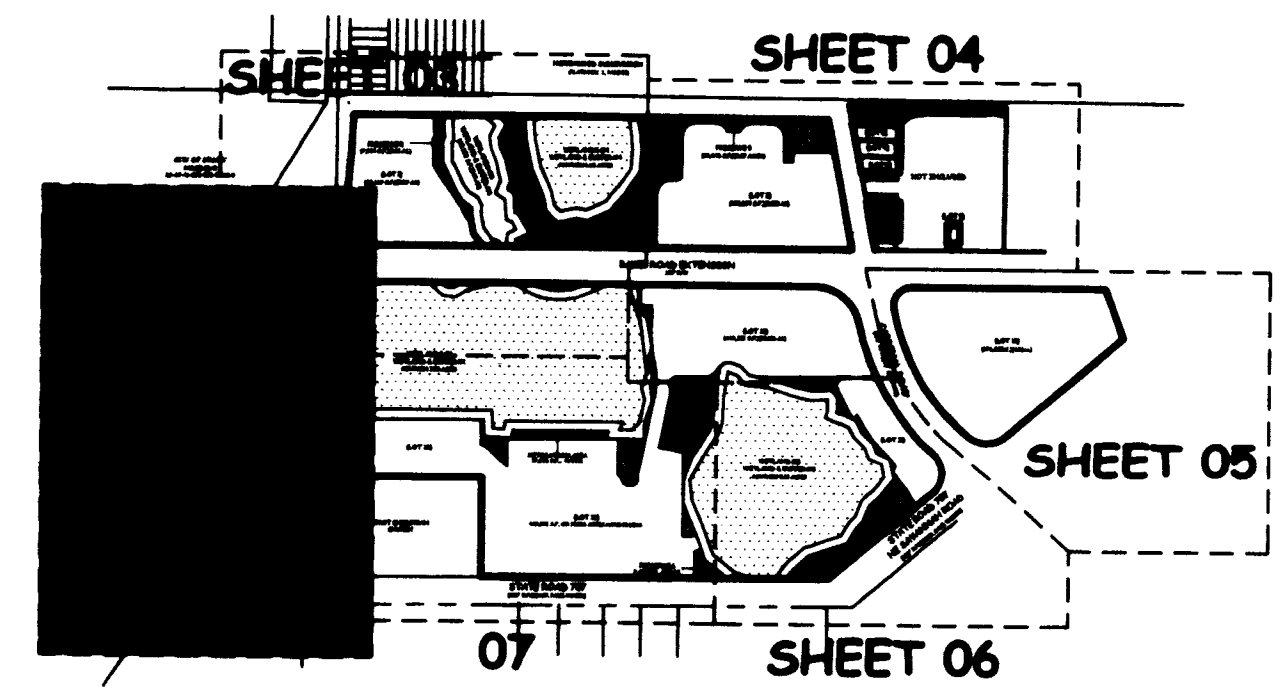
LYING IN A PORTION OF SECTIONS 28 AND 29, TOWNSHIP 37 SOUTH, RANGE 41 EAST,
CITY OF STUART, MARTIN COUNTY, FLORIDA.

PLAT BOOK: 17
PAGE: 39



LEGEND

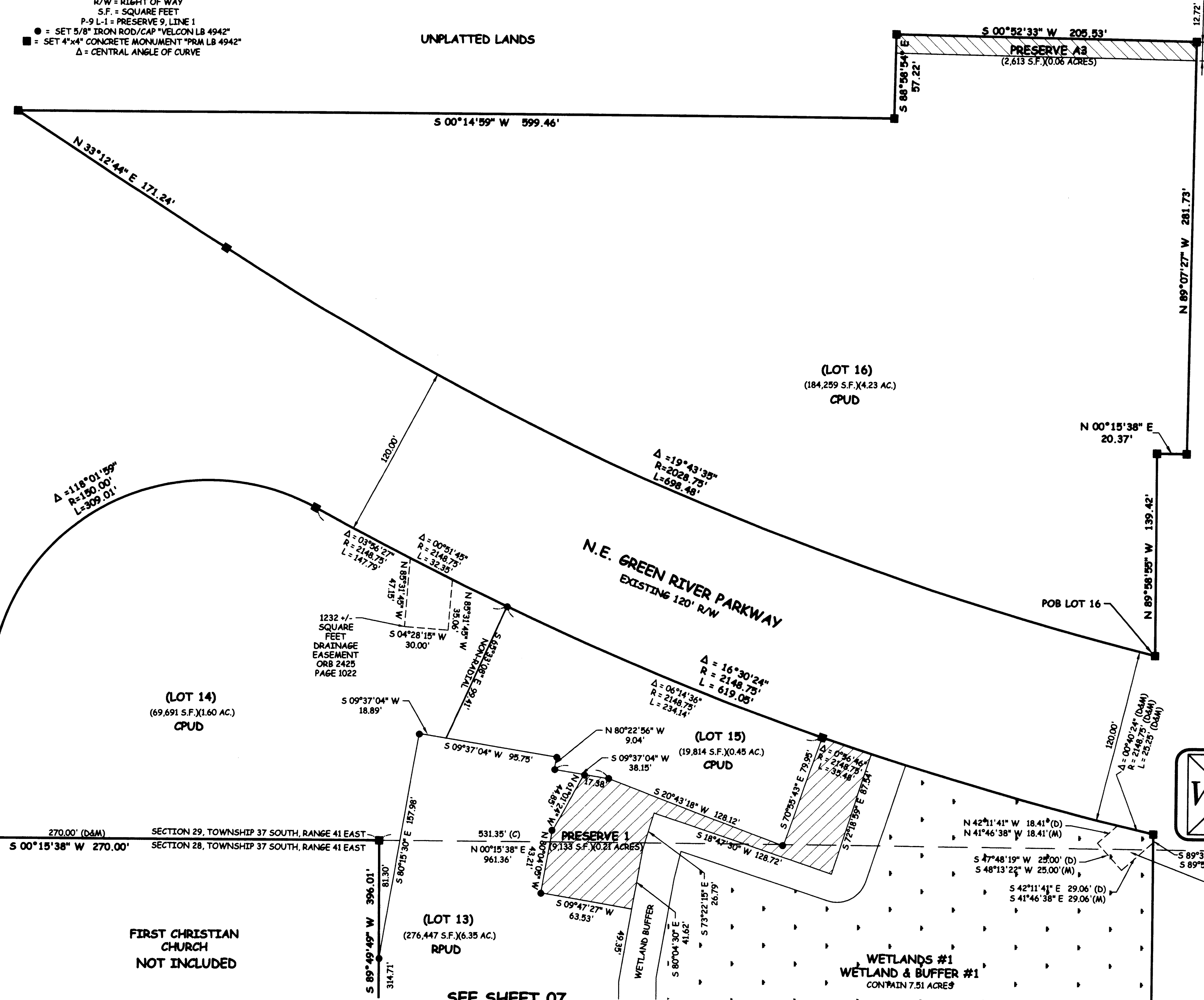
- AC = ACRES
- CPUD = COMMERCIAL PLANNED UNIT DEVELOPMENT
- (D) = DEED
- ID = IDENTIFICATION
- L = LENGTH OF ARC
- LB = LICENSE BUSINESS
- (M) = MEASURED
- ORB = OFFICIAL RECORD BOOK
- PG = PAGE
- POB = POINT OF BEGINNING
- POC = POINT OF COMMENCEMENT
- PRM = PERMANENT REFERENCE MONUMENT
- R = RADIUS
- RPUD = RESIDENTIAL PLANNED UNIT DEVELOPMENT
- R/W = RIGHT OF WAY
- S.F. = SQUARE FEET
- P-9 L-1 = PRESERVE 9, LINE 1
- = SET 5/8" IRON ROD/CAP "VELCON LB 4942"
- = SET 4"x4" CONCRETE MONUMENT "PRM LB 4942"
- Δ = CENTRAL ANGLE OF CURVE



UNPLATTED LANDS

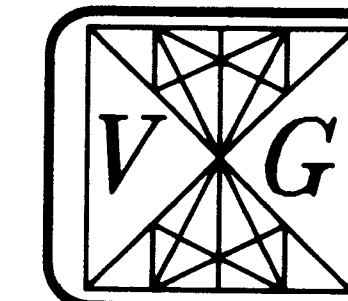
UNPLATTED LANDS

S 00°52'33" W 205.53'
PRESERVE A3
(2,613 S.F.) (0.06 ACRES)



N.E. BAKER ROAD
EXISTING R/W (WIDTH VARIES)

PLAT PREPARED BY:
VELCON GROUP, INC.
ENGINEERS & SURVEYORS
CERTIFICATE OF AUTHORIZATION NO. LB 4942
702 S.W. PORT ST. LUCIE BLVD.
PORT ST. LUCIE, FLORIDA 34953
PHONE (772) 879-0477, FAX (772) 871-6659
Web Site: www.velcongroup.com



655 +/-
SQUARE
FEET
DRAINAGE
EASEMENT
ORB 2425
PAGE 1032

F:\Vrs\jch\13-708\13-082\ldg\LD CIVIL 3D DRAWINGS\13-082 PLAT.dwg, PLAT SHEET 8, 12/22/2015 8:36:36 AM, The Velcon Group, Inc., 772-879-0477